






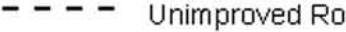
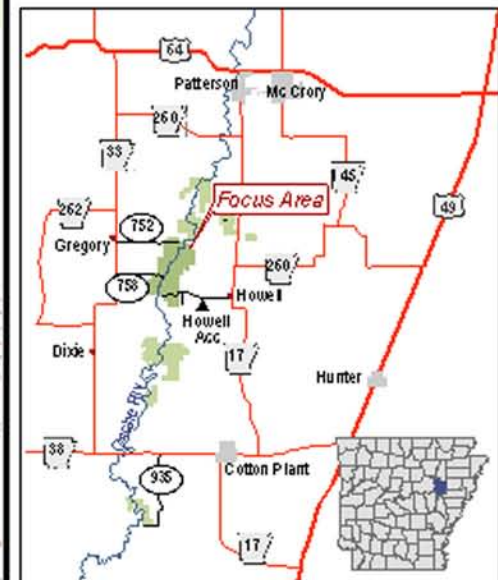
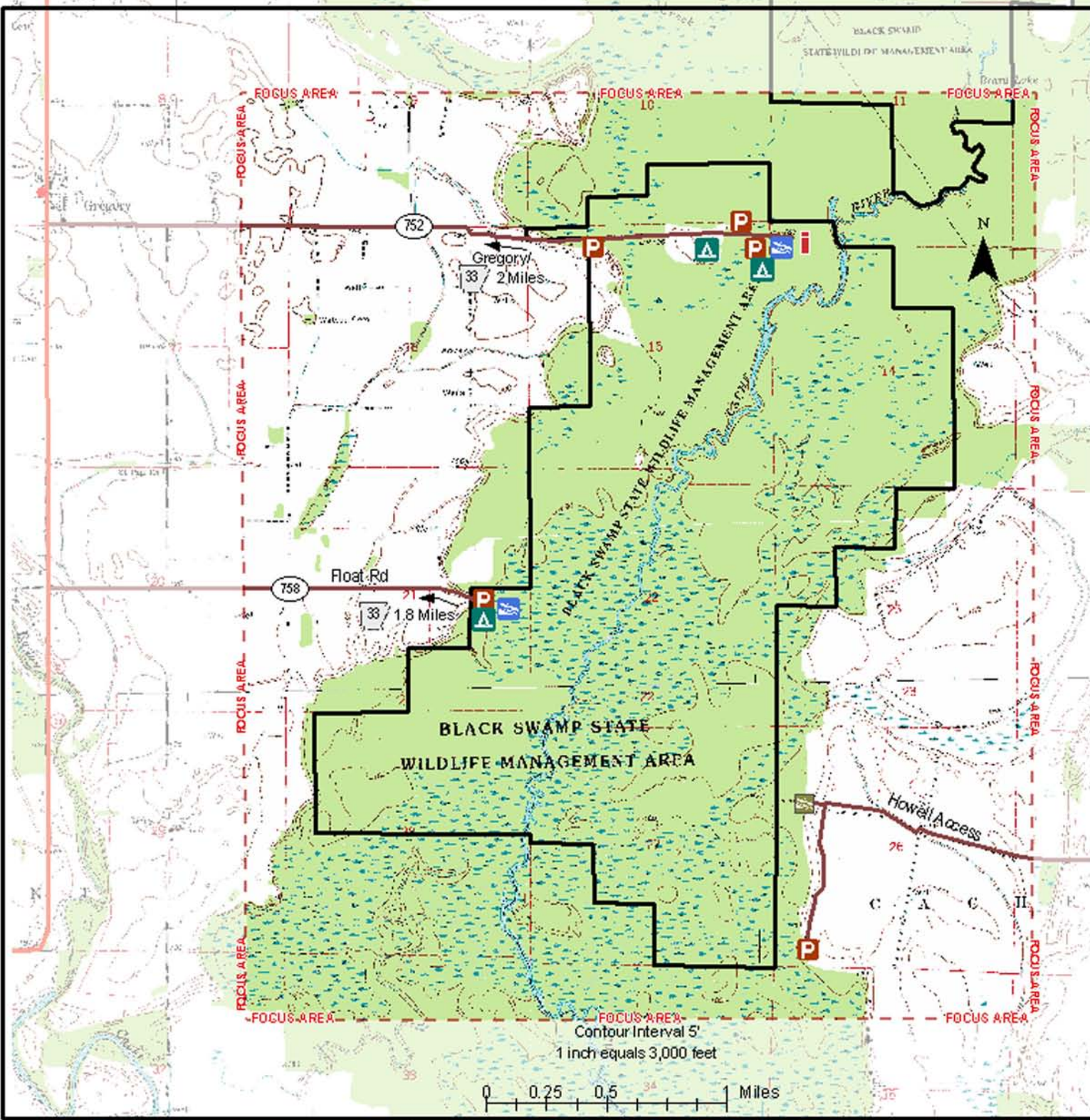




# REX HANCOCK/ BLACK SWAMP WMA

Woodruff County, Arkansas

-  Interpretive Sign
-  Improved Boat Ramp
-  Highwater Boat Ramp
-  Camping
-  Parking
-  County Road
-  Improved Road
-  Unimproved Road



This map was created by the GIS Division of the Arkansas Game & Fish Commission. Base data taken from USGS 7.5' topos and 2000/2001 aerial photos. Every attempt has been made to provide accurate information about our areas. However, due to a wide range of factors we do not guarantee the content accuracy or completeness of this map. It is intended **FOR REFERENCE PURPOSES ONLY**. Always consult the AGFC Regulation Guide and adhere to boundary signs and other on-site indicators. Additional information is available from the Brinkley Regional Office toll-free at 877-734-4581.