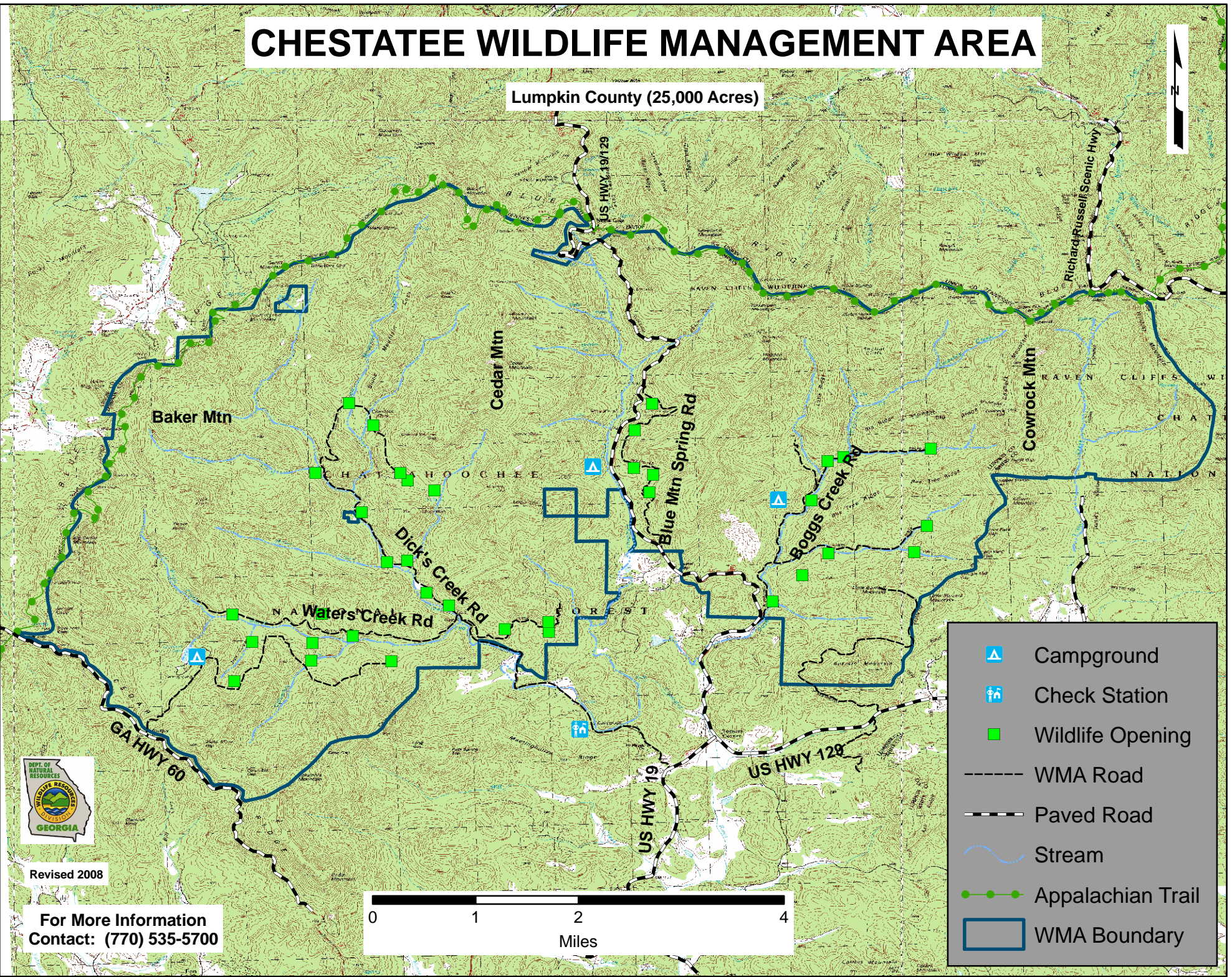


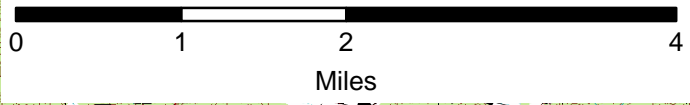
# CHESTATEE WILDLIFE MANAGEMENT AREA

Lumpkin County (25,000 Acres)



Revised 2008

For More Information  
Contact: (770) 535-5700



- Campground
- Check Station
- Wildlife Opening
- WMA Road
- Paved Road
- Stream
- Appalachian Trail
- WMA Boundary