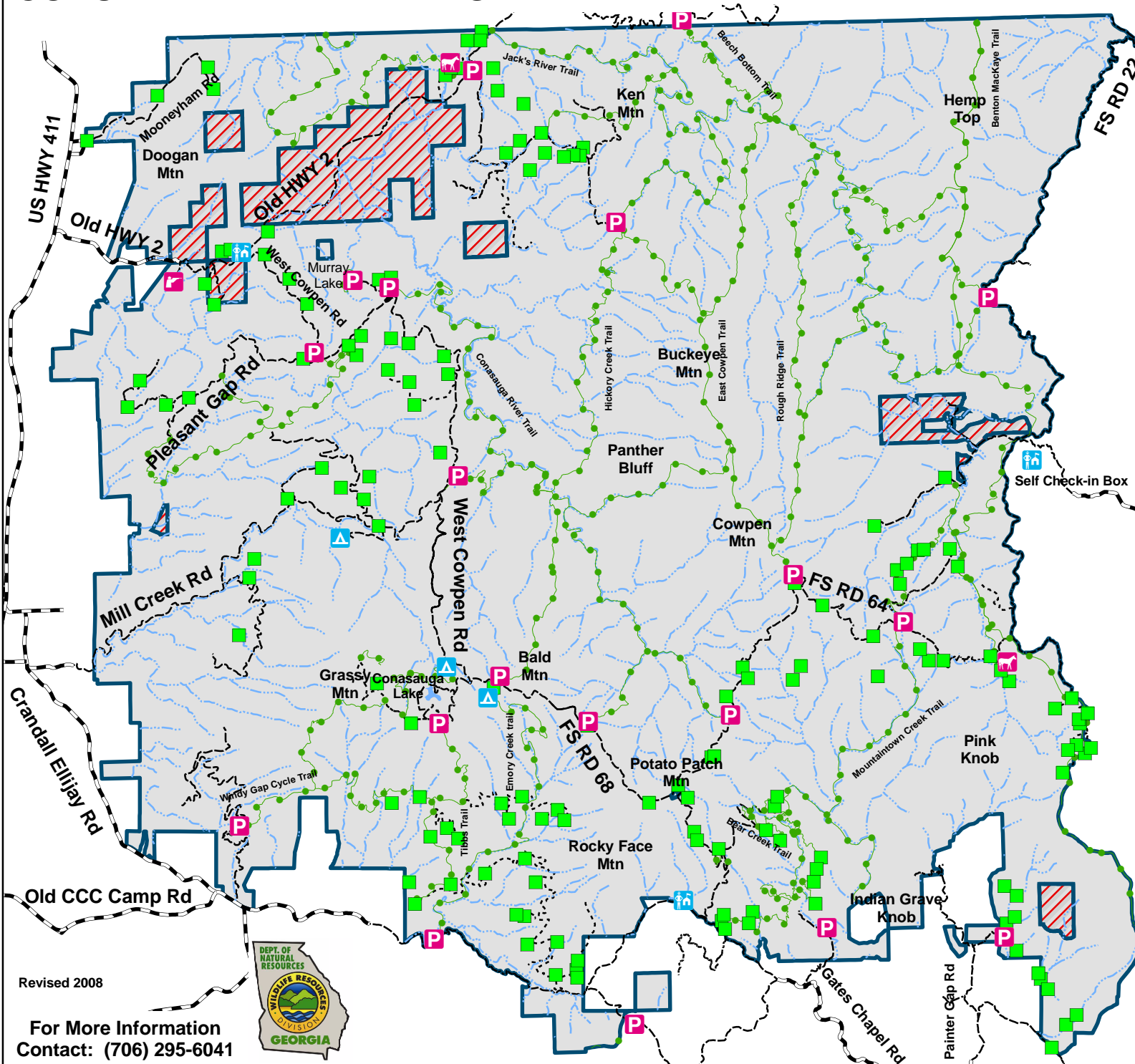
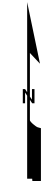


# COHUTTA WILDLIFE MANAGEMENT AREA

Fannin, Gilmer & Murray Counties (96,503 Acres)



	Campground
	Check Station
	Horse Camp
	Parking Area
	Shooting Range
	Wildlife Opening
	Trail
	Stream
	Foot Travel Only
	WMA Road
	Paved Road
	Lake
	Out Area
	WMA Boundary

Revised 2008

For More Information  
Contact: (706) 295-6041

