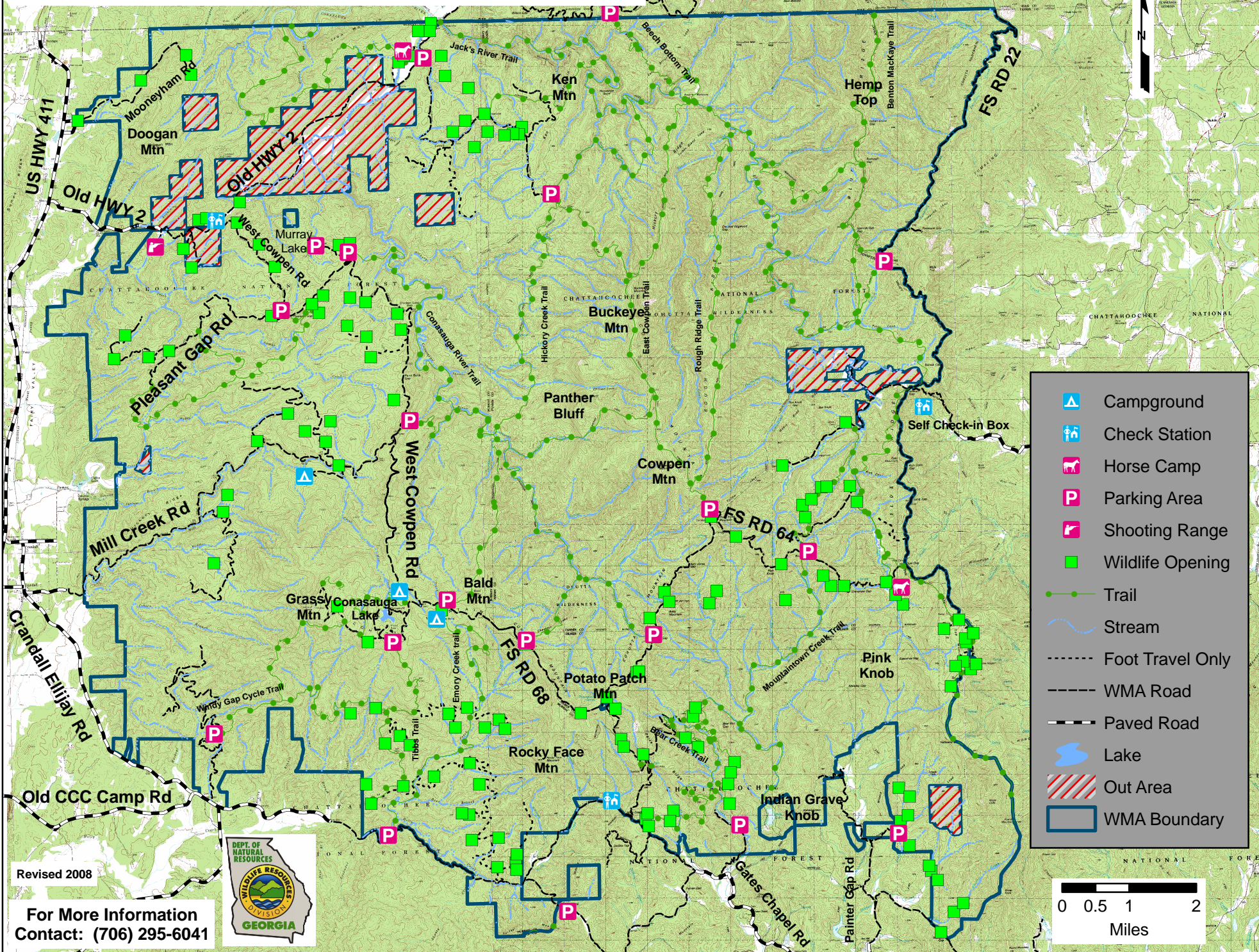
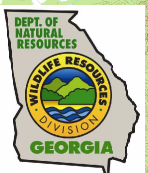


COHUTTA WILDLIFE MANAGEMENT AREA

Fannin, Gilmer & Murray Counties (96,503 Acres)



- Campground
- Check Station
- Horse Camp
- Parking Area
- Shooting Range
- Wildlife Opening
- Trail
- Stream
- Foot Travel Only
- WMA Road
- Paved Road
- Lake
- Out Area
- WMA Boundary



Revised 2008
For More Information
Contact: (706) 295-6041

