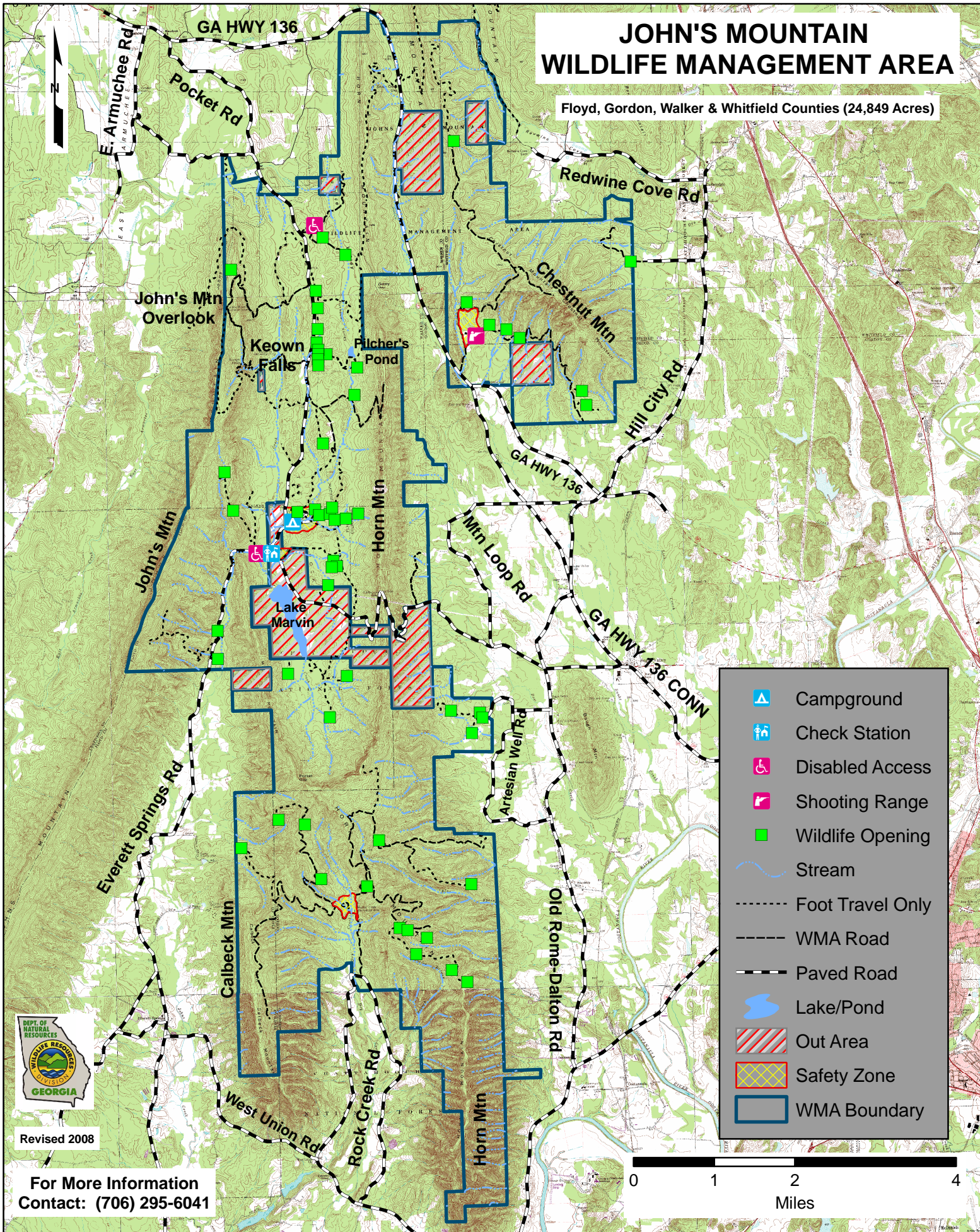


JOHN'S MOUNTAIN WILDLIFE MANAGEMENT AREA

Floyd, Gordon, Walker & Whitfield Counties (24,849 Acres)



- Campground
- Check Station
- Disabled Access
- Shooting Range
- Wildlife Opening
- Stream
- Foot Travel Only
- WMA Road
- Paved Road
- Lake/Pond
- Out Area
- Safety Zone
- WMA Boundary



Revised 2008

For More Information
Contact: (706) 295-6041

