


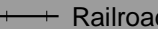


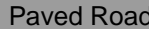

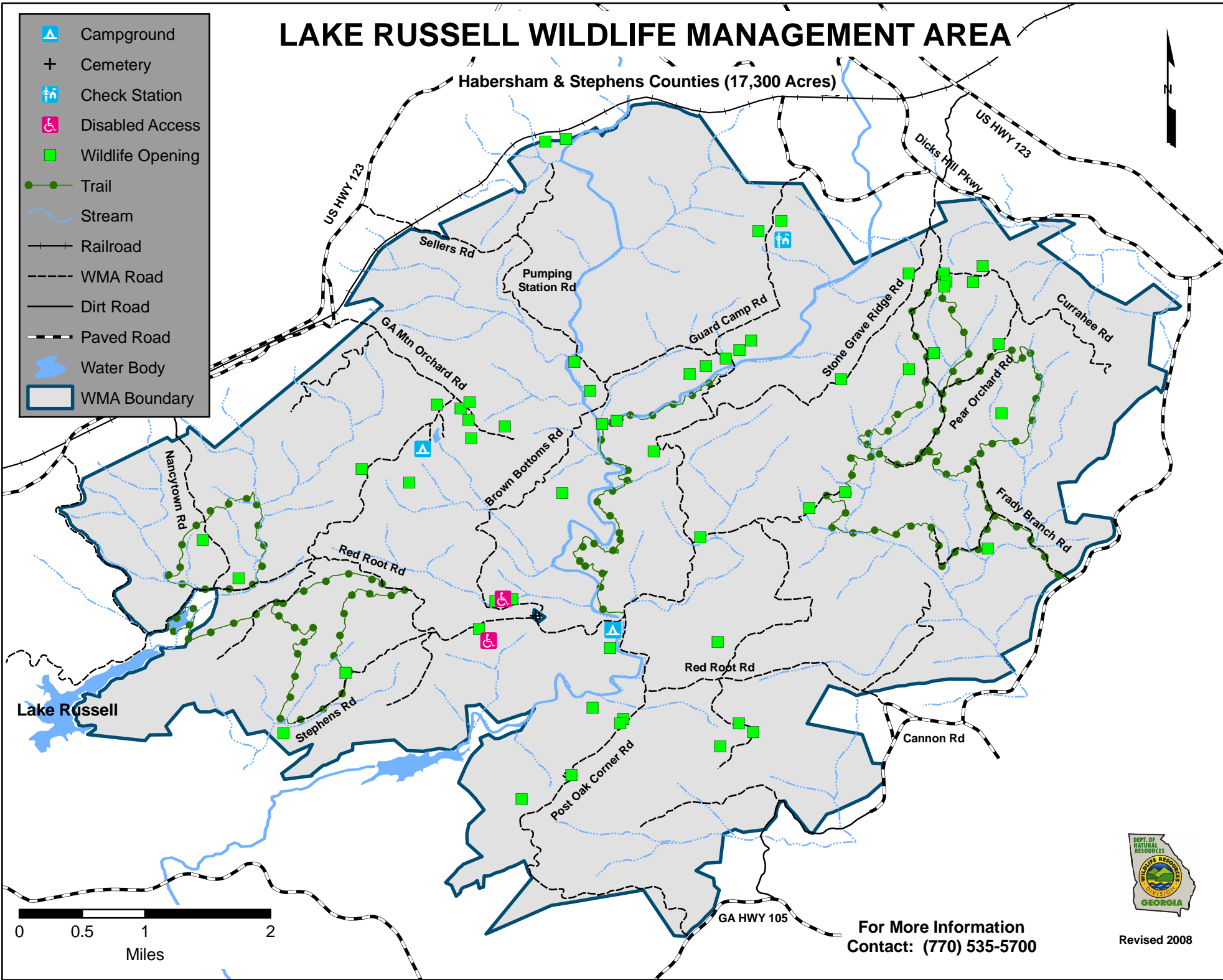


LAKE RUSSELL WILDLIFE MANAGEMENT AREA

Habersham & Stephens Counties (17,300 Acres)

-  Campground
-  Cemetery
-  Check Station
-  Disabled Access
-  Wildlife Opening
-  Trail
-  Stream
-  Railroad
-  WMA Road
-  Dirt Road
-  Paved Road
-  Water Body
-  WMA Boundary



Lake Russell



For More Information
Contact: (770) 535-5700



Revised 2008